

The **Smart Discharger** and **Battery Monitoring System (BMS)** kit are designed

to automatically provide a graphical analysis of a battery's remaining capacity and identify faulty cells. It discharges batteries at a constant controlled current, requiring no manual adjustments throughout the entire process. Following a simple set up process it will automatically transfer battery and cell data to your PC.

Features/Benefits

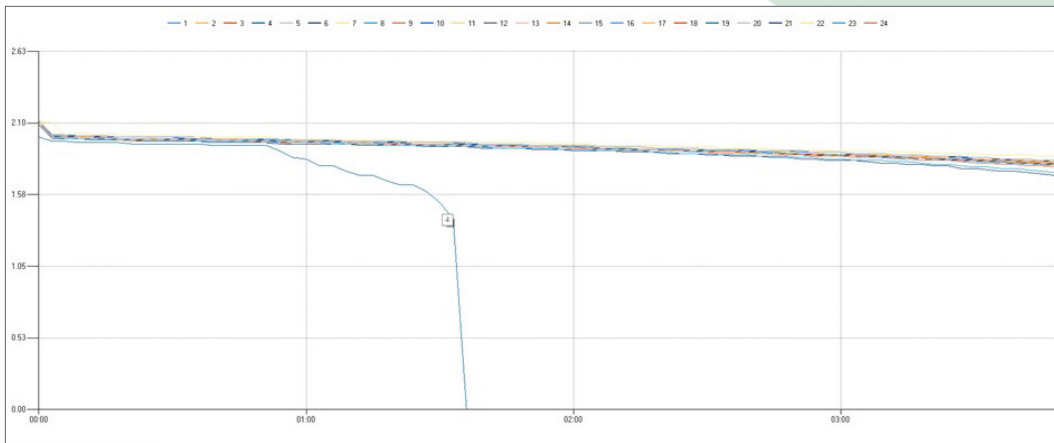
- Cost effective option, requiring minimal supervision
- Allows for overnight or weekend testing
- For all 12–96 V batteries
- Auto stop function
- Easy-to-read digital display
- Automatic discharge termination based on voltage reached, time elapsed, or capacity discharged
- Programmable constant current discharge of 0–200 A
- Allows for C6 discharge rate on batteries up to 1,200 Ah
- Capable of monitoring each cell with addition of wireless BMS sensors
- Includes 24 wireless Bluetooth sensors
 - Additional sensors are available for purchase



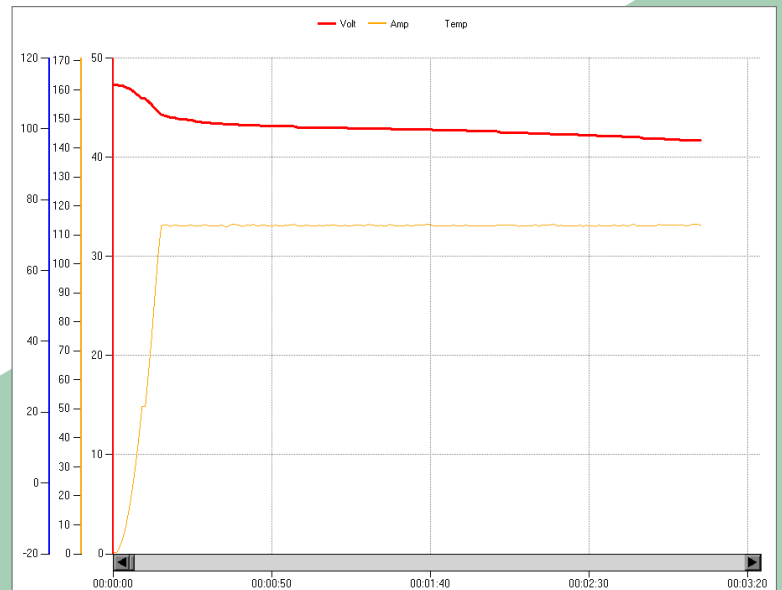
	1	2	3	4	5	6	7	8	9	10	11	12	13	14	15	16	17	18	Sum	Avg
00:00	2.2	2.2	2.2	2.2	2.2	2.2	2.2	2.2	2.2	2.2	2.2	2.2	2.2	2.2	2.2	2.2	2.2	2.2	39.60	2.20
00:03	2.2	2.2	2.2	2.2	2.2	2.2	2.2	2.2	2.2	2.2	2.2	2.2	2.2	2.2	2.2	2.2	2.2	2.2	39.60	2.20
00:06	2.19	2.19	2.19	2.19	2.19	2.19	2.19	2.19	2.19	2.19	2.19	2.19	2.19	2.19	2.19	2.19	2.19	2.19	39.42	2.19
00:09	2.18	2.18	2.18	2.18	2.18	2.18	2.18	2.18	2.18	2.18	2.18	2.18	2.18	2.18	2.18	2.18	2.18	2.18	39.25	2.18
00:12	2.18	2.18	2.18	2.18	2.18	2.18	2.14	2.18	2.18	2.18	2.18	2.18	2.18	2.18	2.18	2.18	2.18	2.18	39.20	2.18
00:15	2.17	2.17	2.17	2.17	2.17	2.17	2.14	2.17	2.17	2.17	2.17	2.17	2.17	2.17	2.17	2.17	2.17	2.17	39.03	2.17
00:18	2.17	2.17	2.17	2.17	2.17	2.17	2.14	2.17	2.17	2.17	2.17	2.17	2.17	2.17	2.17	2.17	2.17	2.17	39.03	2.17
00:21	2.16	2.16	2.16	2.16	2.16	2.16	2.14	2.16	2.16	2.16	2.16	2.16	2.16	2.16	2.16	2.16	2.16	2.16	38.86	2.16
00:24	2.16	2.16	2.16	2.16	2.16	2.16	2.14	2.16	2.16	2.16	2.16	2.16	2.16	2.16	2.16	2.16	2.16	2.16	38.86	2.16
00:27	2.15	2.15	2.15	2.15	2.15	2.15	2	2.15	2.15	2.15	2.15	2.15	2.15	2.15	2.15	2.15	2.15	2.15	38.55	2.14
00:30	2.15	2.15	2.15	2.15	2.15	2.15	2	2.15	2.15	2.15	2.15	2.15	2.15	2.15	2.15	2.15	2.15	2.15	38.55	2.14
00:33	2.14	2.14	2.14	2.14	2.14	2.14	2	2.14	2.14	2.14	2.14	2.14	2.14	2.14	2.14	2.14	2.14	2.14	38.38	2.13
00:36	2.14	2.14	2.14	2.14	2.14	2.14	1.89	2.14	2.14	2.14	2.14	2.14	2.14	2.14	2.14	2.14	2.14	2.14	38.27	2.13
00:39	2.13	2.13	2.13	2.13	2.13	2.13	1.85	2.13	2.13	2.13	2.13	2.13	2.13	2.13	2.13	2.13	2.13	2.13	38.06	2.11
00:42	2.13	2.13	2.13	2.13	2.13	2.13	1.75	2.13	2.13	2.13	2.13	2.13	2.13	2.13	2.13	2.13	2.13	2.13	37.96	2.11
00:45	2.12	2.12	2.12	2.12	2.12	2.12	1.6	2.12	2.12	2.12	2.12	2.12	2.12	2.12	2.12	2.12	2.12	2.12	37.64	2.09
00:48	2.12	2.12	2.12	2.12	2.12	2.12	1.6	2.12	2.12	2.12	2.12	2.12	2.12	2.12	2.12	2.12	2.12	2.12	37.64	2.09
00:51	2.11	2.11	2.11	2.11	2.11	2.11	1.6	2.11	2.11	2.11	2.11	2.11	2.11	2.11	2.11	2.11	2.11	2.11	37.47	2.08
00:54	2.11	2.11	2.11	2.11	2.11	2.11	1.6	2.11	2.11	2.11	2.11	2.11	2.11	2.11	2.11	2.11	2.11	2.11	37.47	2.08
00:57	2.1	2.1	2.1	2.1	2.1	2.1	1.6	2.1	2.1	2.1	2.1	2.1	2.1	2.1	2.1	2.1	2.1	2.1	37.30	2.07
00:60	2.1	2.1	2.1	2.1	2.1	2.1	1.6	2.1	2.1	2.1	2.1	2.1	2.1	2.1	2.1	2.1	2.1	2.1	37.30	2.07

Example Reports

Individual Cell Capacity During Discharge
(for easy detection of failed cells)



Overall Battery Voltage, Amperage, and Temperature During Discharge
(for overall battery health)



BMS Sensors	2 V	6 V	8-12 V
M1001 Kit	---	8	6
M1007 Kit	24*	---	---

*Additional sensors available for purchase

Model	Input Voltage	Max Input Current	Output Voltage	Load Capacity	Max Amp Hour Rating
Smart Discharger			Dim.: 16" x 16" x 37" Wt.: 143 lbs.		
93-D1007-200	120 VAC, Single-Phase	115 VAC 15 A	10-110 VDC	0-200 A	1200 Ah C6