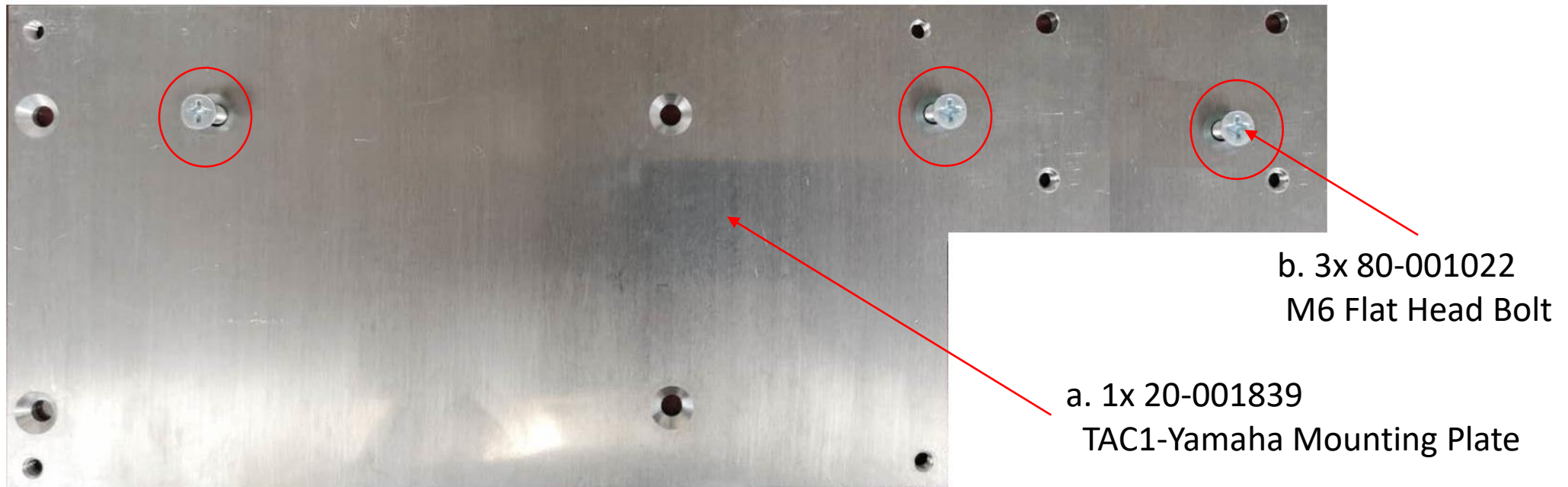


10-000846 TAC1-Yamaha G29 Mounting Plate Assembly instruction:

Step1: Remove old mounting plate form frame of the Cart
Use 80-01022 Install 20-0001839 on frame

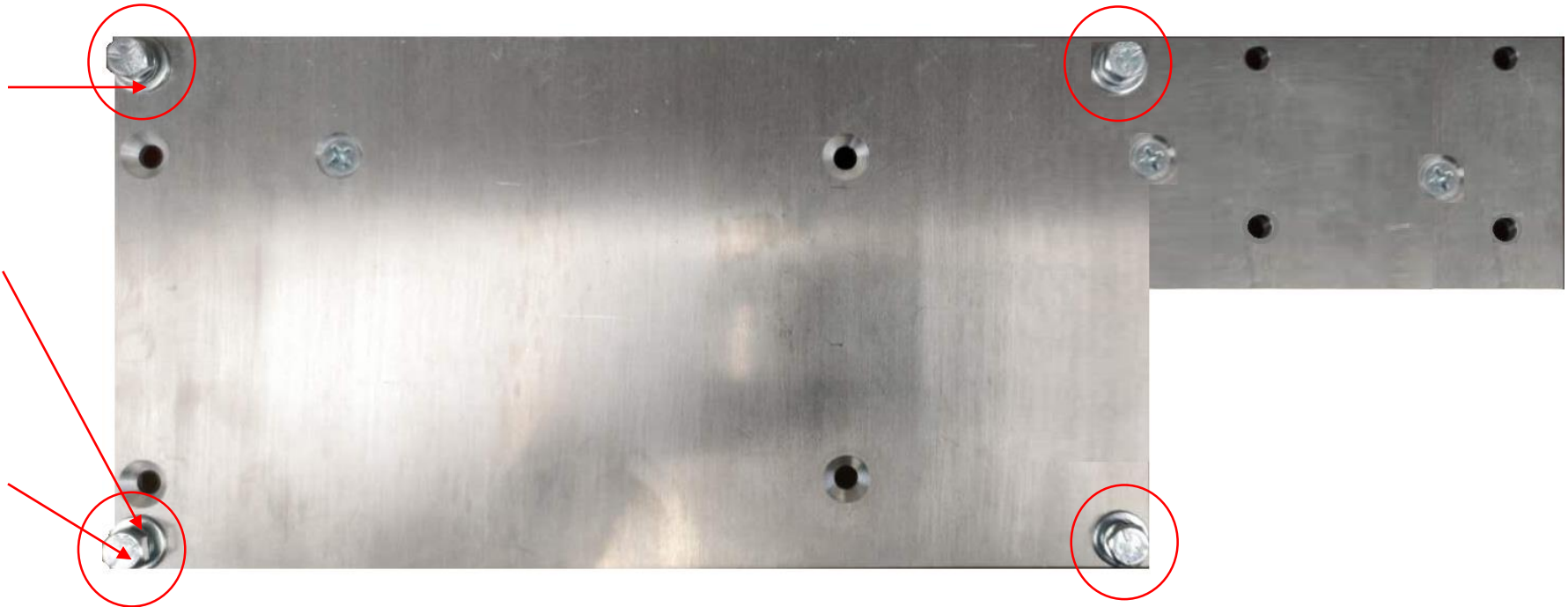


Step2: Install TAC1 Controller With 80-000206, 80-000208 and 80-000214 on the plate

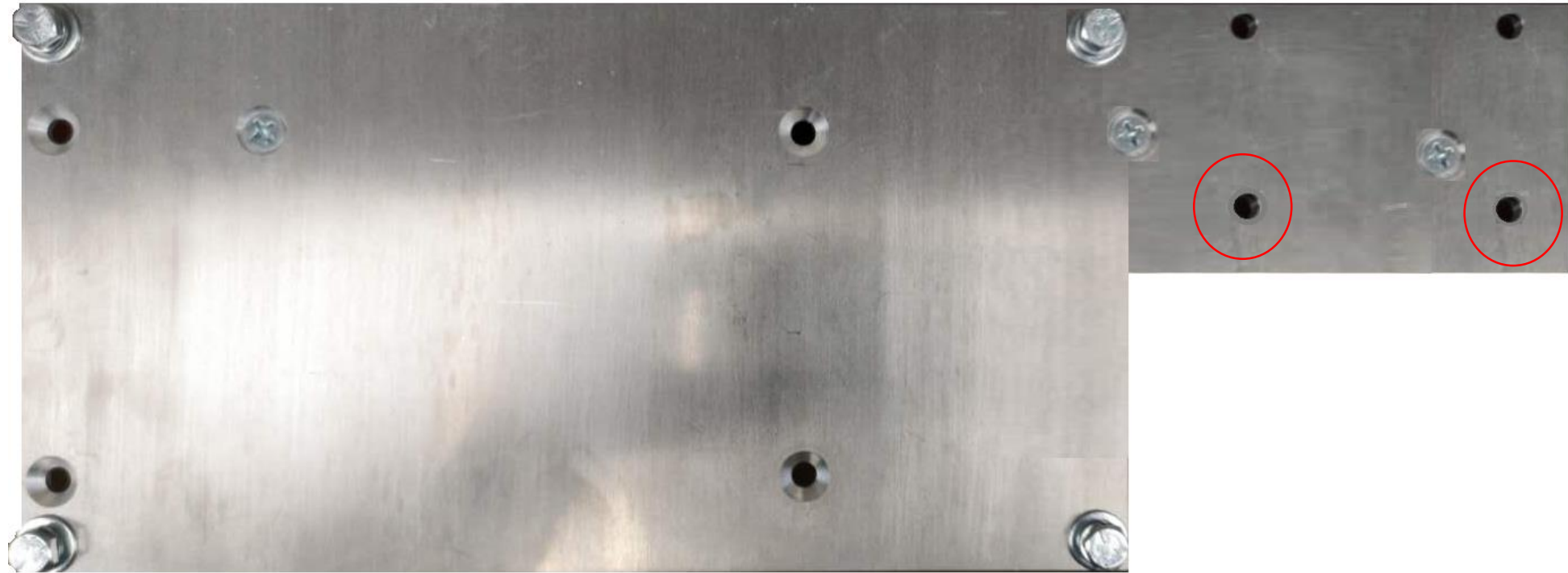
a. 4x 80-000206
1/4 Flat Washer

b. 4x 80-000208
1/4 Lock Washer

c. 4x 80-000214
1/4-20 Bolt



Step3: Use two original M6 bolts mounting Solenoid on those two holes



10-000836 TAC1-Yamaha G29 Mounting Plate

Parts list:

| GOI Part No. | Comment | Quantity |
|--------------|----------------------------------|----------|
| 20-001839 | TAC1 Mounting plate for Yamaha | 1 |
| 80-001022 | M6-1.0*16mm Flat Head Screw | 3 |
| 80-000214 | 1/4-20 x 1" Full Thread Hex Bolt | 4 |
| 80-000206 | 1/4" Flat Washer | 4 |
| 80-000208 | 1/4" Lock Washer | 4 |